

Northeast corner Section 14, Township 12 North, Range 70 West
 Southeast corner Section 11, Township 12 North, Range 70 West

CERTIFIED LAND CORNER RECORDATION

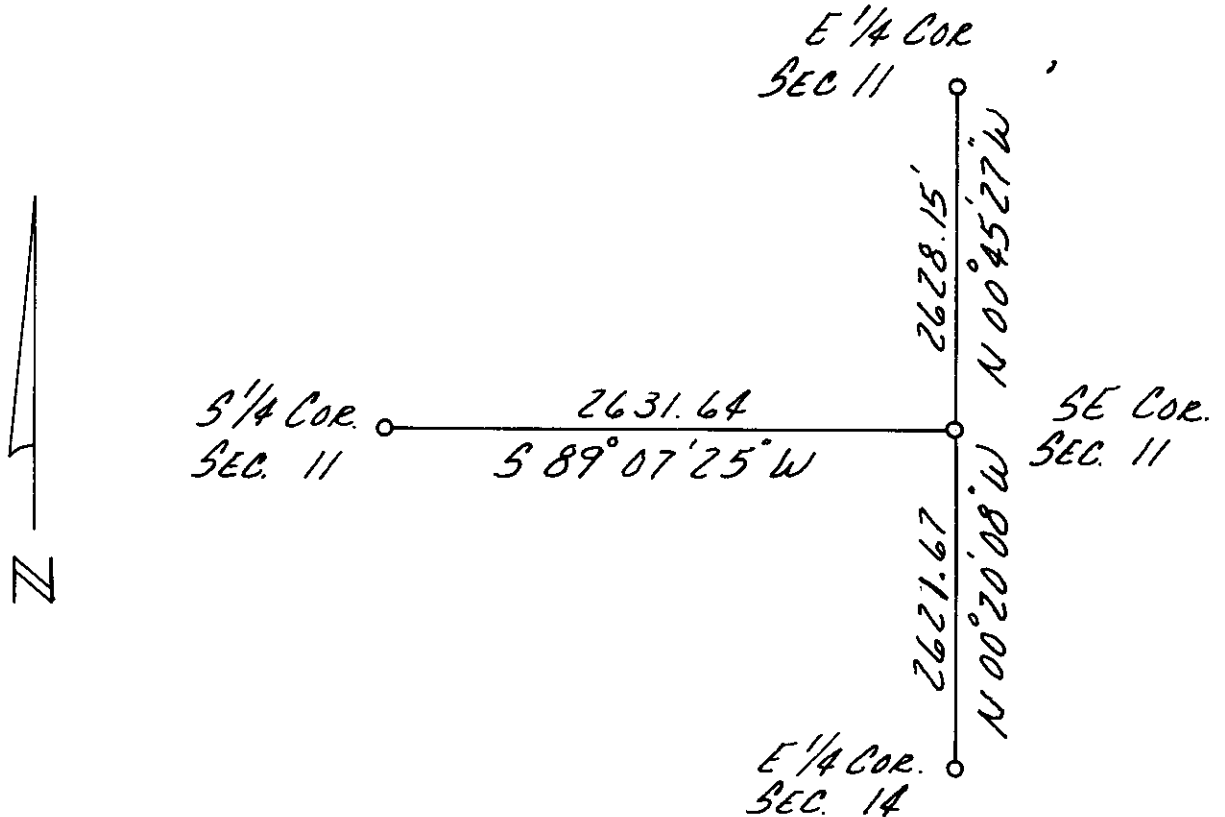
DESCRIPTION OF CORNER EVIDENCE FOUND, AND ORIGINAL RECORD (If known)

The original corner was a stone 20" x 16" x 8" with four notches on the South side and one notch on East side
 Found mound of stone at 4.6± West of intersection of North - South fence on fence line running West

DESCRIPTION OF MONUMENT AND ACCESSORIES ESTABLISHED TO PERPETUATE THE ORIGINAL LOCATION OF THIS CORNER:

Set 5/8 inch copper rod with 1 1/2 inch copper cap stamped with P.E. & L.S. 692 in mound of stone
 From the corner to ties:
 North 47.88 feet to nail and flagging in fence post
 West 62.35 feet to nail and flagging in fence post
 East Southeast 6.72 feet to nail and flagging in fence post

SKETCH, WITH COURSE AND DISTANCE TO ADJACENT CORNER IF DETERMINED IN THIS SURVEY. (May Sketch or Paste Reproduction on Reverse Side.)



I, Neil M. Kruback certify that I have carefully performed or reviewed the work done on the diagrammed corner as reported on this recordation form and approve the same.

Neil M. Kruback
 Signature of Surveyor

692
 Registration No.

STATE OF WYOMING,
 Office of Clerk and Recorder,
 County of Terrance

This "corner record" was filed for record on the 18 day of December, 1973, was noted on the cross-index plat and is assigned page No. _____, in book No. _____.

John B. Neuman
 County Official

Cross Index No. <u>J-21</u>	T. <u>12 N</u>	R. <u>70W 6thP</u>	Mer.
_____	T. _____	R. _____	Mer.
_____	T. _____	R. _____	Mer.
_____	T. _____	R. _____	Mer.
_____	T. _____	R. _____	Mer.
_____	T. _____	R. _____	Mer.
_____	T. _____	R. _____	Mer.

Photographed
Indexed
Posted
Assessor

The State of Nevada
County of Esmeralda } ss
This instrument was filed for record
at 11 27 o'clock A.M. on the
18 day of December
A.D. 1973
Book _____

CLERK'S OFFICE, CLERK OF DISTRICT COURT
IN AND FOR THE COUNTY OF ESMERALDA, NEVADA
SP